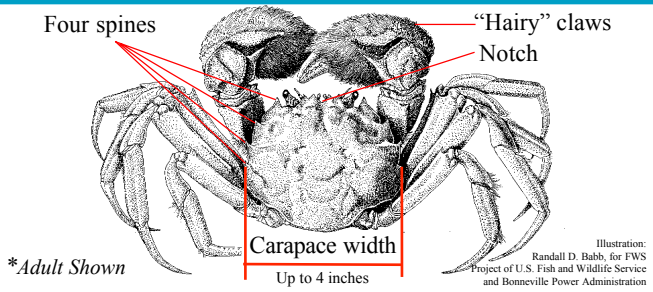


Mitten Crab WATCH

How to Identify a Mitten Crab

- Adult crabs live in fresh waters of North America; juveniles live in estuaries
- Claws equal in size, "hairy" (juveniles may not have "hairy"claws), white tips
- Four lateral carapace spines (last one smaller); notch between eyes
- Carapace up to 4 inches (10 cm) wide; light brown to olive green in color



*Adult Shown

The Mitten Crab

First discovered on the U.S. East Coast in 2007 in the Chesapeake Bay, by 2012 a mitten crab was found as far north as Greenwich, Conn. Native to Asia, mitten crabs may pose a serious threat to freshwater, estuarine and marine ecosystems as well as the economy of the eastern United States. They create burrows that increase erosion and weaken stream banks. In other areas they have invaded, mitten crabs have financially impacted commercial fisheries through bait stealing and preying on fish captured in nets. They can carry the oriental lung fluke, a threat to human health. Mitten crabs are most easily identified by a notch between the eyes and hairy claws on the adults (other identification traits are on the back of this card). Your help is vital to report new sightings and to prevent their spread.

Design credit: Pacific States Marine Fisheries Commission

If you catch a mitten crab,

- Do not throw it back alive!
- Freeze it or preserve it in rubbing alcohol.
- Note the precise location where the crab was found.
- Contact your local natural resource management agency:
 In Maine, call Maine DMR (207.633.9524)
 In New Hampshire, call N.H. Fish and Game (603.868.1095)
 In Massachusetts, call MIT Sea Grant (617.252.1741)
 In Rhode Island, call DEM - Marine Fisheries (401.423.1939)
 In Connecticut, call DEEP (860.434.6043)
 In Quebec, call MDDEFP (418.627.8694 x7461)
 In New Brunswick, Nova Scotia and Prince Edward Island,
 call the Aquatic Invasive Species Hotline (1.866.759.6600)

REMINDER: Know the local rules for transporting mitten crabs!

Mitten crab specimens are needed to confirm sightings, but many jurisdictions have different possession and transport rules. Contact your local natural resources agency for instructions. Never transport live mitten crabs.

2014 Maine, N.H. and MIT Sea Grant programs