

Atlantic Cod Management Workshops



New England
Fishery Management
Council



**New England Fishery Management Council
Northeast Fisheries Science Center
University of New Hampshire/NH Sea Grant**

Atlantic Cod Management

Northeast Multispecies (Groundfish) Fishery Management Plan

- 13 species, 20 stocks, and 2 management units
- Complex management system
 - Atlantic Cod
 - 2 stocks: Georges Bank Cod and Gulf of Maine Cod
 - Transboundary Management Unit US/Canada – Eastern Georges Bank Cod
- Commercial (sectors and common pool) and recreational catches
 - Limits – catch limits and associated management measures
 - Closures – protection, spawning, and habitat closures

Atlantic Cod Management

Stock Status and Rebuilding

- Stock assessments for the Gulf of Maine cod stock and the Georges Bank cod stock generally occur every two years.
- Eastern Georges Bank cod management unit is assessed annually.
- Based on 2019 assessments, the Gulf of Maine cod and Georges Bank cod stocks are overfished with overfishing occurring, and subject to rebuilding plans with rebuild by dates of 2024 and 2026, respectively.
- The stock status of cod in the Eastern Georges Bank management unit is poor and subject to a rebuilding plan in Canada.

Atlantic Cod Management

Stock Status and Rebuilding

- Stock assessments for the Gulf of Maine cod stock and the Georges Bank cod stock generally occur every two years.
- Eastern Georges Bank cod management unit is assessed annually.
- Based on 2019 assessments, the Gulf of Maine cod and Georges Bank cod stocks are overfished with overfishing occurring, and subject to rebuilding plans with rebuild by dates of 2024 and 2026, respectively.
- The stock status of cod in the Eastern Georges Bank management unit is poor and subject to a rebuilding plan in Canada.

Atlantic Cod Management

Sectors

- Majority of the commercial fishery
- System of quotas and sector allocations
- Leasing/trading
- Accountability measures
- Gulf of Maine cod protection closures
- Spawning closures
- Reporting and Monitoring- ASM and NEFOP
- Gear and mesh restrictions
- Minimum fish sizes (19 in for cod)

**GARFO
Summary Table
Sector
Catch Monitoring**

Report run on: August 05 2021
For data reported August 03 2021
through: 2021
Quota Period: May 1, 2021 to April 30,
Quota Period Dates: 2022

Stock	Cumulative Kept (mt)	Cumulative Discard (mt)	Cumulative Catch (mt)	Sub-ACL** (mt)	Percent Caught
GB Cod East	16.9	0.9	17.8	182.1	9.8
GB Cod	127.3	3.5	130.8	1045.2	12.5
GOM Cod	29.7	1.2	30.9	262.2	11.8

Atlantic Cod Management

Common Pool Trimester Total Allowable Catch Area Closures

Common Pool

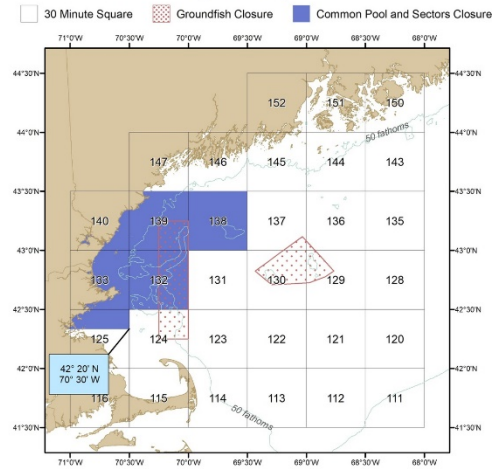
- System of trimester quotas
- Trip limits
- Area base restrictions and closure in-season
- Gulf of Maine cod protection closures
- Spawning closures
- Reporting and Monitoring- NEFOP
- Gear and mesh restrictions
- Minimum fish sizes (19 in for cod)

Stock	Statistical Area	Gear
Gulf of Maine (GOM) cod	513, 514	Trawl, gillnet, longline/hook
Georges Bank (GB) cod	521, 522, 525, 561	Trawl, gillnet, longline/hook

Atlantic Cod Management

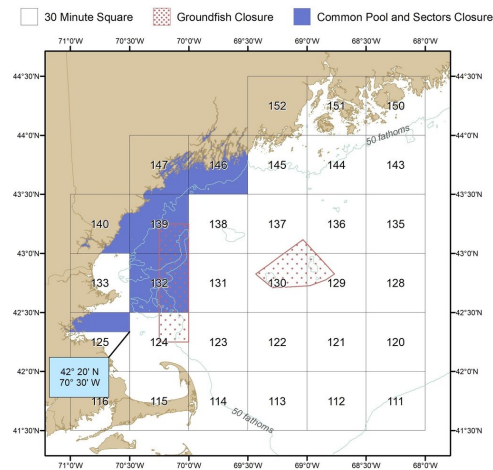
GOM Cod Protection Closure I

May 1 - May 31



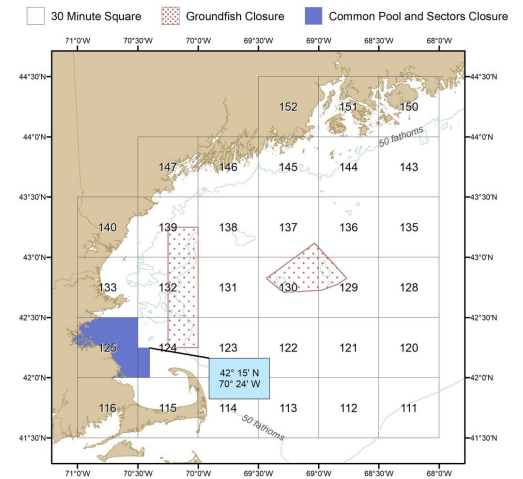
GOM Cod Protection Closure II

June 1 - June 30



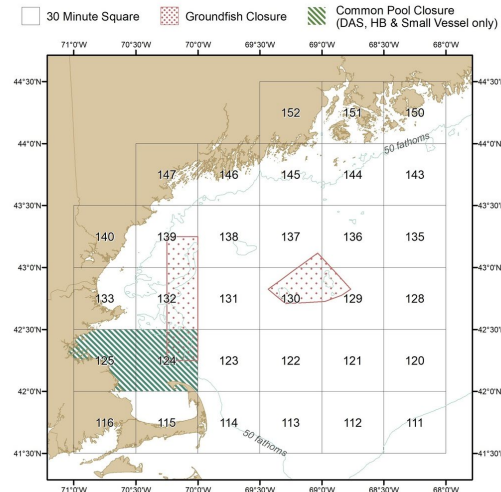
GOM Cod Protection Closure III

November 1 - January 31



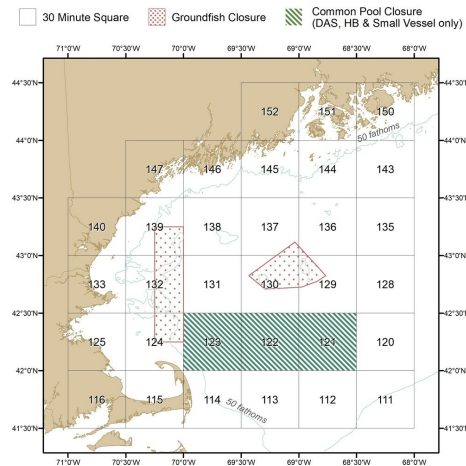
GOM Cod Protection Closure IV

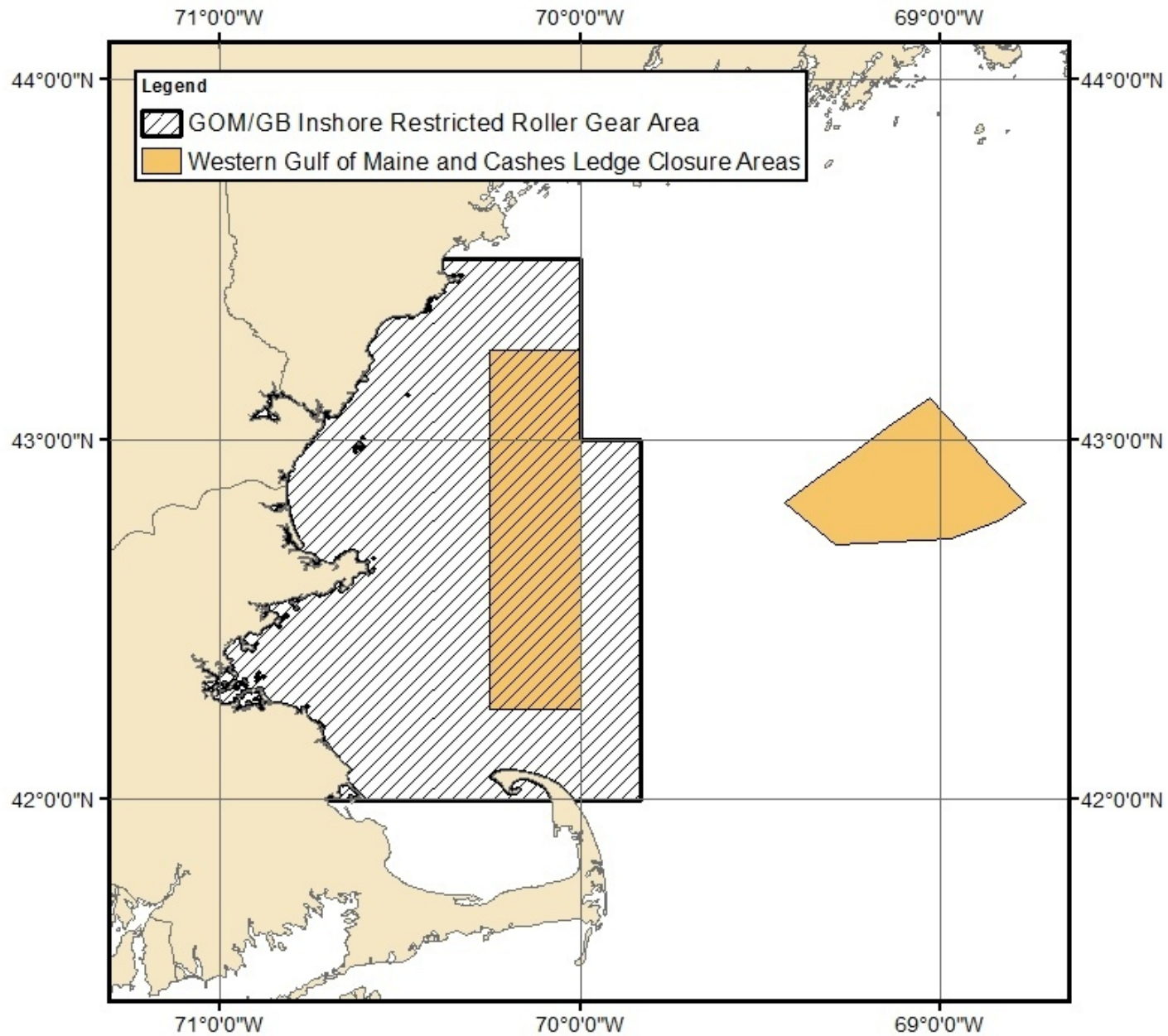
October 1 - October 31



GOM Cod Protection Closure V

March 1 - March 31





For all trawl vessels fishing in the GOM/GB Inshore Restricted Roller Gear Area, the maximum diameter of any part of the trawl footrope, including discs, rollers or rockhoppers, may not exceed 12 inches.

Atlantic Cod Management

Recreational

- Angler and For-Hire (party/charter)
- Bag limits
- Seasons
- Minimum fish size
- Spawning closure
- For-Hire Reporting
- MRIP

In Gulf of Maine Regulated Mesh Area

Open season:

- Private Anglers - September 15-30; April 1 - 14
- Party/Charter Anglers - September 8 - October 7; April 1 - 14

Minimum size: 21 inches

Possession limit:

- Private Anglers - 1 fish per day.
- Party/Charter Anglers - 1 fish per day

Outside of Gulf of Maine Regulated Mesh Area

Open season: All year

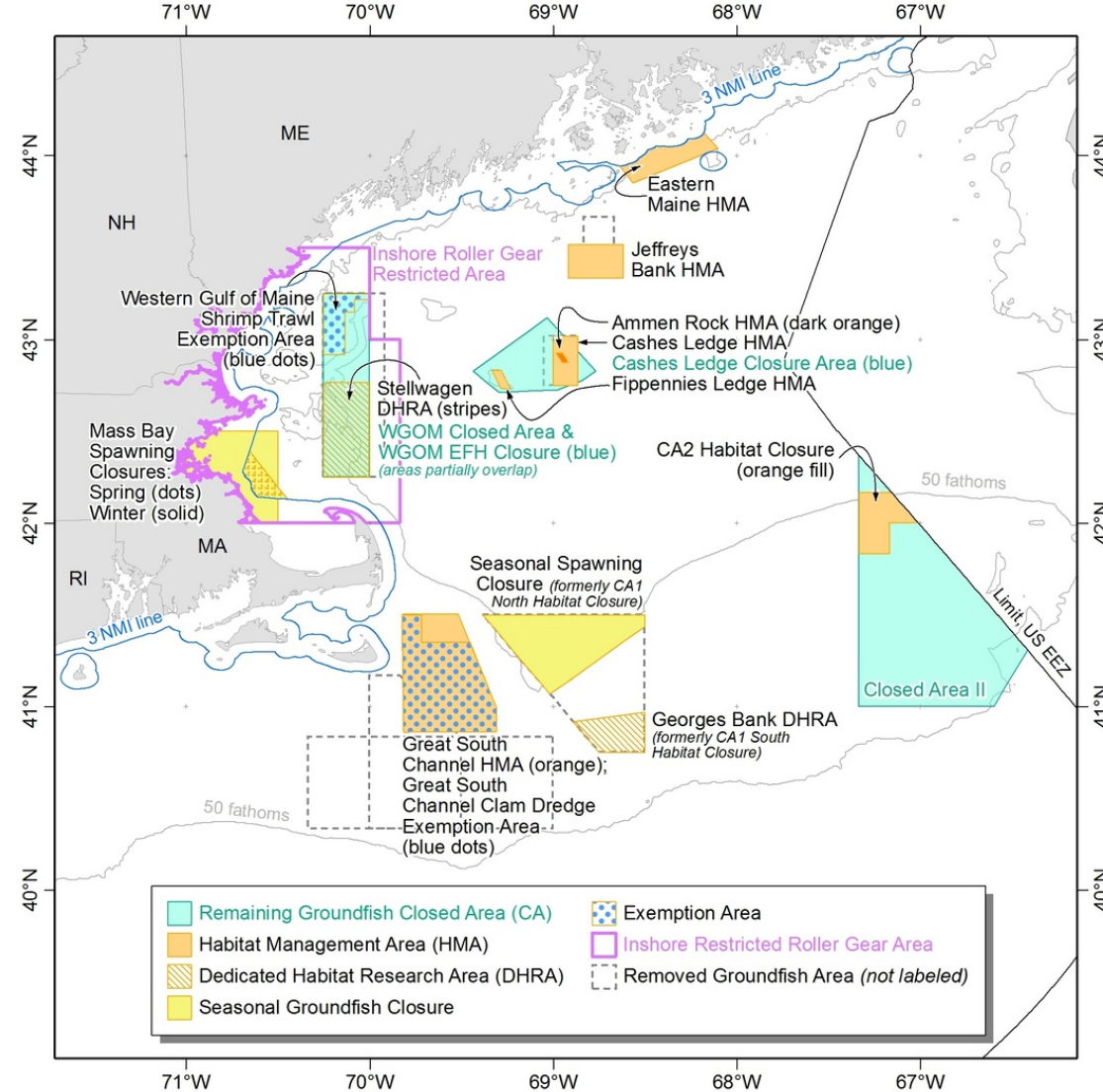
Minimum size: 21 inches

Possession limit:

- Private Anglers - 10 fish per day.
- Party/Charter Anglers - 10 fish per day

Atlantic Cod Management

Habitat/Spawning



Atlantic Cod Management

Habitat/Spawning

